

Beaux Arts Edition

LOVE'S OLD SWEET SONG



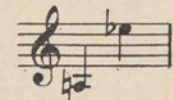
by
J.L. MOLLOY

Eclipse
PUBLISHING CO.
126 N. 3RD ST. PHILA. PA.

5

LOVE'S OLD SWEET SONG.

ALTO or BASS in Eb.



Words by G. CLIFTON BINGHAM.

J. L. MOLLOY.

Andante con moto.

rit. *a tempo*

Once in the dear dead days be-yond re-call, When on the world the mists be-gan to fall,

Out of the dreams that rose in hap-py throng Low to our hearts Love sung an old sweet song,

And in the dusk where fell the fire light gleam, Soft-ly it wove it-self in - to our dream.

rit.

Just a song at twi-light, when the lights are low, And the flick'ring shad-ows

p

soft-ly come and go, Tho' the heart be wea-ry, sad the day and long,

f *mf*

Still to us at twi - light comes Love's old song, comes Love's old sweet song.

rit. *f rit.* *sempre* *rit.*

mf

E - ven to - day we hear Love's song of yore, Deep in our hearts it dwells for ev - er more;

p

Foot steps may fal - ter, wea - ry grow the way, Still we can hear it at the close of day.

mf

So till the end, when life's dim shad ows fall, Love will be found the sweet est song of all.

p rit.

a tempo

Just a song at twi - light, when the lights are low, And the flick'ring

p cantando

sempre *And.* *And.*

shad - ows soft - ly come and go; Tho' the heart be wea - ry,

f

mf

And. *And.* *ad lib.*

sad the day and long, Still to us at twi - light comes Love's old song, comes

Love's old sweet song.

f animato

rit.

And. * *And.*

BEAUTIFUL STAR OF HEAVEN.

REVERIE.

LOUIS A. DRUMHELLER.

Copyright, 1905, by Jos. Morris.

pragmat
Lowland
48648